



INSTALLATION INSTRUCTIONS



2014 CHEVROLET SS 6.2L

PART NO. 15290

BILL OF MATERIALS:



- 1. X-PIPE CONN. ASSEMBLY
- 2. MUFFLER D/S ASSEMBLY
- 3. MUFFLER P/S ASSEMBLY



WEAR SAFETY GLASSES



READ INSTRUCTIONS THOROUGHLY BEFORE INSTALLING PRODUCT

SHOP SUPPLIES:



SPRAY LUBRICANT

To ease removal of existing exhaust components (especially on older vehicles) spray penetrating lubricant on all fasteners and hangers/insulators that will be loosened or removed and let soak before disassembly.

HARDWARE KIT:

- 1.[2] 2.50" Clamp
- 2.[2] 2.25" Clamp

MINIMUM REQUIRED TOOLS:



13mm
15mm



Hanger Tool
(Or Pry Bar)



Sawzall or other cutting device.

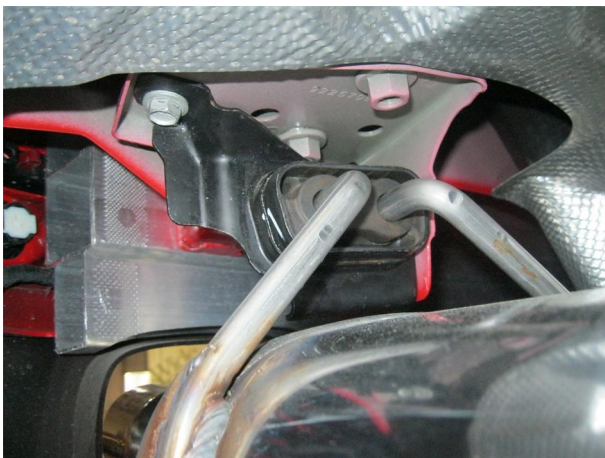
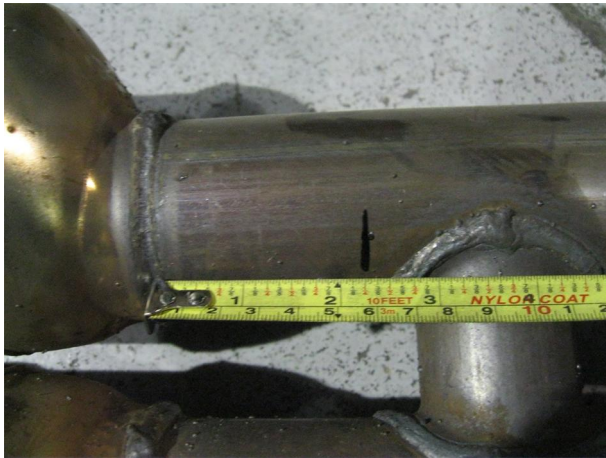
MAGNAFLOW RECOMMENDS PROFESSIONAL INSTALLATION ON ALL THEIR PRODUCTS



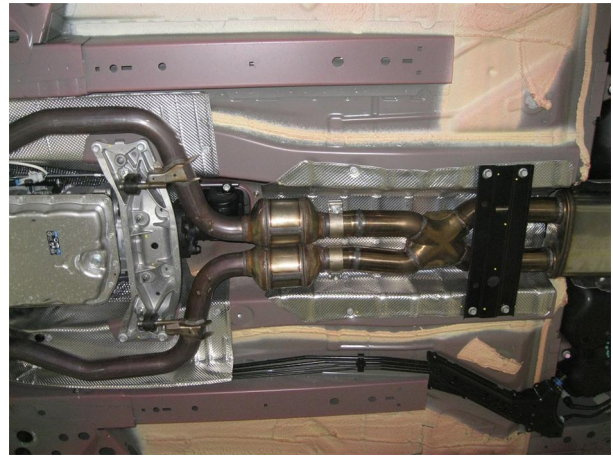
WARNING: When working on, under, or around any vehicle exercise caution. Please allow the vehicle's exhaust system to cool before removal, as exhaust system temperatures may cause severe burns. If working without a lift always consult vehicle manual for correct lifting specifications. Always wear safety glasses and ensure a safe work area. Serious injury or death could occur if safety measures are not followed.

ATTENTION: Always install any supplied band or U-bolt clamps to the proper torque specifications of 40-45 ft-lbs for band clamps and 30-35 ft-lbs for U-bolt clamps. Over tightening will result in the clamp breaking and will NOT be warranted by MagnaFlow.

INSTALLATION INSTRUCTIONS



Step 1. To remove the OEM exhaust system, you will first need to remove the tunnel brace using a 15mm socket. Then cut the pipe 2 1/4" behind the catalytic converters. Last you will need to unfasten the two muffler hanger mounts using a 13mm socket. Do not damage or discard the OEM fasteners or rubber insulators, as they will be reused to mount the new system. Disengage all hangers and remove the OEM system from the vehicle.



Step 2. To install your new Magnaflow system first install the X-Pipe Conn. Assembly to the outlet of the catalytic converter using the supplied 2.25" clamp.



Step 3. To ease Installation, switch over the hanger mounts to your new Muffler Assemblies before they are mounted to the vehicle. Next install the Muffler Assemblies Inlet pipes to the X-pipe Conn. Assembly using the supplied 2.50" clamp and by fastening the hanger mounts back to the vehicle using OEM fasteners. Leave all clamps and fasteners loose for final adjustment of the complete system.



Step 4. Working front to rear insert all the remaining hangers into rubber insulators. Do not forget to re-install the tunnel brace using the OEM fasteners.



Step 5. Once a final position has been chosen for the new exhaust system, evenly tighten all clamps from front to rear using the torque specifications on page one of the instructions. Inspect all fasteners after 25-50 miles of operation and re-tighten if necessary.